

a26

asbestos essentials

Non-licensed tasks

This information will help employers and the self-employed to comply with the Control of Asbestos Regulations 2006.

It is also useful for trade union and employee safety representatives.

Asbestos fibres can cause lung cancer and lung diseases.

The sheet covers the points you need to follow to reduce exposure to an adequate level.

It can act as a risk assessment for asbestos if it matches what you plan to do.

Follow all the points, or use equally effective measures.

Only carry out this work if you are properly trained and have the right equipment.

Main points

- Asbestos fibres can kill.
- Keep exposures low using all the controls in this sheet.
- Also follow sheet a0 and equipment and method (em) sheets; see 'Essential information'.



Textured coating on a ceiling

Drilling and boring through textured coatings

What this sheet covers

This sheet describes good practice when you need to drill through textured coating.

This sheet is NOT appropriate:

- If work lasts more than one hour per week for a worker; or
 - if work lasts two hours in total for two or more workers.
- The work is still non-licensed but you need to make a risk assessment.

If the coating is on asbestos insulating board, see sheet a1.

Preparing the work area

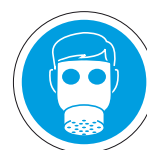
- Restrict access - minimise the number of people present.
- Close doors. Use tape and notices to warn others.
- A two-stage airlock is not required.
- Ensure adequate lighting.

Equipment

- 500-gauge polythene sheeting and duct tape;
- warning tape and notices;
- Class H vacuum cleaner (BS EN 60335 - see sheet em4) for cleaning;
- drill - manual or powered, set at the lowest speed;
- drill bit, or hole cutter for holes greater than 20 mm diameter;
- thick paste, eg wallpaper paste or shaving foam, or a proprietary device to contain drilling debris;
- permanent sealant;
- paint brush;
- bucket of water and rags;
- asbestos waste container, eg labelled polythene sack; and
- clear polythene sack.

Personal protective equipment (PPE) - see sheet em6

- Provide:
 - disposable overalls fitted with a hood;
 - boots without laces (laced boots are hard to decontaminate); and
 - respiratory protective equipment.



SAFETY CHECKLIST

- ✓ Can you avoid disturbing asbestos by doing the job in some other way?
- ✓ Do you need a licence for the work?
- ✓ Always follow all legal requirements.
- ✓ Follow the task guidance sheet.
- ✓ Use an asbestos waste container.
- ✓ Dispose at a licensed disposal site.

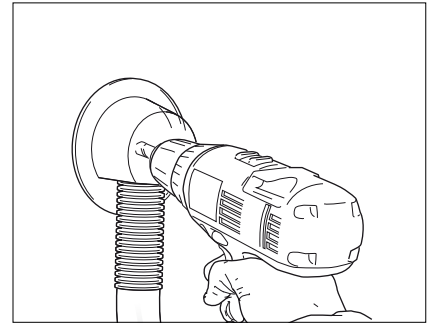
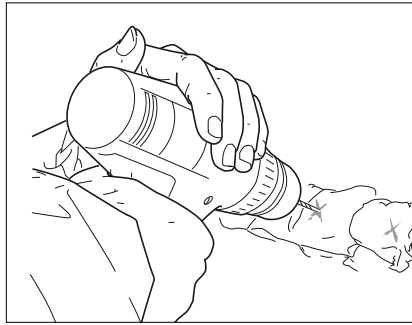
Caution:

- Don't sweep up dust or debris - use a Class H vacuum cleaner or damp rags.
- Don't take used overalls home.
- Don't re-use disposable PPE.
- Don't smoke.
- Don't eat or drink in the work area.

OTHER HAZARDS

Work at height - see www.hse.gov.uk/falls/index.htm. Take precautions to avoid falls. Must you work from a ladder? Where necessary, erect an access platform.

There may also be other hazards - you need to consider them all.



Drill through paste or foam or use a plastic cowl and a Class H vacuum cleaner. A hand drill creates less dust. If you have to use an electric drill, put it on the slowest setting.

Procedure

- Remove furniture and fittings from the area, or protect them from contamination using 500-gauge polythene sheet.
- Protect nearby surfaces from contamination. Cover with 500-gauge polythene sheeting and fix with duct tape to non-asbestos surfaces.
- For cable and pipework, make the hole slightly bigger than required.

Drilling and boring

- Cover the drill entry and, if accessible, exit points with a generous amount of paste, foam or a proprietary device.
- Drill through the paste, foam or device.
- Clean off the paste, foam and debris with damp rags. Or remove the device and clean the surface. Clean the back surface with damp rags, if accessible.
- Rags and paste or foam contain dust and fibres. Dispose of as asbestos waste.
- Seal the drilled edge with sealant.

Cleaning and disposal

- Clean the area and equipment with the Class H vacuum cleaner and damp rags.
- Put debris, used rags, paint brush, polythene sheeting and other waste in the asbestos waste container and tape it closed.
- Put the asbestos waste container in a clear polythene sack and tape it closed.
- Disposal - see sheet em9.

Personal decontamination

- See sheet em8

MORE HELP

- **Licensed asbestos contractors, and training providers** - HSE's Infoline
Tel: 0845 345 0055
Textphone: 0845 408 9577
e-mail: hse.infoline@natbrit.com
and at www.hse.gov.uk/asbestos/licensing/index.htm
- **HSE priced and free publications** -
HSE Books Tel: 01787 881165
and at www.hsebooks.co.uk
- **Qualified hygienists** - The
British Occupational Hygiene
Society (BOHS) Tel: 01332 298101
and at www.bohs.org/ under
'Professional > Consultants'
- **Trade associations** - the Asbestos
Removal Contractors Association
(ARCA) Tel: 01283 531126 Website:
www.arcaweb.org.uk, or the Asbestos
Control and Abatement Division (ACAD)
Tel: 01325 466704
- **Disposal of asbestos waste** -
www.environment-agency.co.uk,
www.sepa.org.uk/, or
www.netregs.gov.uk/netregs.
- **More asbestos pictures** -
www.hse.gov.uk/asbestos/gallery.htm
- **Help to decide if work is licensed** -
[www.hse.gov.uk/asbestos/licensing/
index.htm](http://www.hse.gov.uk/asbestos/licensing/index.htm)

Clearance and checking off

- Visually inspect the area to make sure that it has been cleaned properly.
- Clearance air sampling is not normally required.
- Get the premises owner, duty-holder or client to check off the job.

ESSENTIAL INFORMATION

Download and follow these advice sheets from www.hse.gov.uk/asbestos/essentials/index.htm:

- em1 What to do if you uncover or damage materials that could contain asbestos*
- em2 Training*
- em4 Using a Class H vacuum cleaner for asbestos*
- em6 Personal protective equipment (PPE)*
- em7 Using damp rags to clean surfaces of minor asbestos contamination*
- em8 Personal decontamination*
- em9 Disposal of asbestos waste*

This document is available at www.hse.gov.uk/asbestos/essentials/index.htm

© Crown copyright This publication may be freely reproduced, except for advertising, endorsement or commercial purposes. First published as part of *Asbestos Essentials Task Manual 2001*. Please acknowledge the source as HSE.

Published by the Health and Safety Executive 12/07

This guidance is issued by the Health and Safety Executive. Following the guidance is not compulsory and you are free to take other action. But if you do follow the guidance you will normally be doing enough to comply with the law. Health and safety inspectors seek to secure compliance with the law and may refer to this guidance as illustrating good practice.